



# KELLY DITTMANN

## Candidate for Harper Board of Trustees

Kelly Dittmann is a dynamic leader with extensive business and educational background spanning global experiences and industries. She is a recent transplant to the Barrington area where she resides with her husband and school aged child. Her previous community involvement has led her to seek a position on the board of trustees for Harper College.

Kelly has broad P&L accountability leading Fortune 500 companies across multiple industries advancing digital, technology, financial services, life sciences, health care, energy, non-profit and education priorities. Known as a partner and collaborator, Kelly will work to achieve results as she serves on the Harper Board.

The Harper College annual budget exceeds \$100 Million and coupled with hundreds of millions of dollars in taxpayer brick and mortar assets, makes Kelly an ideal addition to the board of trustees. Additionally, Kelly's ability to influence across all levels, innovate new and future-focused strategies will benefit Harper as it continues to evolve in an ever-changing marketplace.

The election is April 6, 2021 where Kelly is one of four candidates for three seats on the board. College attendance has been flat and Kelly looks forward to aligning the needs of employers by matching student curriculums that feed the economy with a trained work force. Our plan is to prepare Harper students for success by better connecting programs to outcomes.

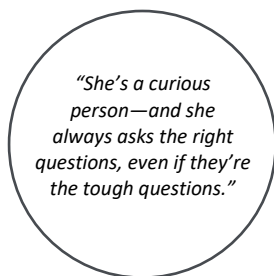
The Harper College District 512 employ nearly 1,500 teachers, support staff and has a student population of over 15,000. The district encompasses the Barrington area to Wheeling and Prospect Heights and then south to Roselle and Hanover Park. Kelly Dittmann is committed to the challenge and the responsibility that a trustee position holds for her constituents.

### EXPERTISE

- Chief Strategy Officer, Advisor
- Strategic Planning, C-Suite
- Large-Scale P&L Operations
- Mergers & Acquisitions
- Innovation, Design and Growth
- Integration and Automation
- Data Analytics and Digital Transformation
- Technology Investment & Financials
- Executive Advisor and Coach
- C-Suite Storytelling and Facilitation
- Organizational Change Management

### IMPACT

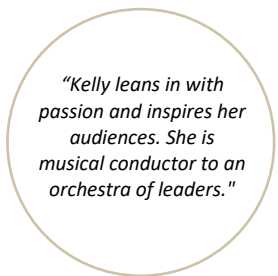
- The Walt Disney Company
- American Heart Association
- Wells Fargo & Company
- Principal Financial Group
- Municipal Securities Rulemaking Board
- University of Chicago, Booth School of Business
- Bankers Trust Company
- United Way, Education Leadership Initiative
- Salesforce, Amazon, Google
- Central States Pension Funds, Teamsters
- Goodwill Industries
- Drake University



Jennifer Hall, CSO and President American Heart Association



Joyce Pingel, CTO Head of Technology Caterpillar, Holt CAT



Dan Houston, CEO and Chairman Principal Financial Group

### EDUCATION AND COMMUNITY ACHIEVEMENTS

#### EDUCATION

- Advanced Strategy & Economics: Building and Implementing Growth Strategies** The University of Chicago, Booth School of Business Chicago, IL
- MBA Executive Leadership and Finance** Drake University Des Moines, IA
- Participated in Executive Strategy and Communications Program
- BS Organizational Leadership and Management** Purdue University West Lafayette, IN
- Lead, Jazz Ensemble; Competed in Montreux Jazz Festival – Switzerland

#### COMMUNITY ACHIEVEMENTS

- Board of Directors** Central Iowa Shelter Services (CISS) – Des Moines, IA
- Chair of program and community development. Created strategy and capital campaign.
- Cabinet Co-Chair, Board Member** United Way Education Leadership Initiative (ELI) National Chapter Atlanta, GA; Chicago, IL; Des Moines, IA; Increased in membership 40% since 2010 managing executive program.
- Strategic Advisor, Mentor** AgriTech Accelerator and iEmergent Technologies
- Mentored leaders, increased data-driven offerings and market growth results.
- Community Leader, Board Member** Make-A-Wish Foundation – Chicago, IL; Des Moines, IA. Increased participation through fundraising 140% over 4-year period.

